

bel etage

bel etage

Detailed descriptions of the objects presented in this catalogue are available for download in German and English from our website www.beletage.com. On request, we will also send these description to you by post or email.

The German National Library lists this publication in the German National Bibliography.

IMPRINT

Publisher: bel etage Kunsthandel GmbH, Wien/Vienna
Conception and organisation: Wolfgang Bauer
Object descriptions, expert: Wolfgang Bauer
in cooperation with: Carina Hammer MA, Mag. Agnes Mayrhofer
Translation: Tim Sharp, Mag. Sabine Hübler
Proofreading: Mag. Sabine Hübler
Photos: August Lechner
Graphic design: August Lechner
Print: Druckerei Berger, Horn
All rights reserved
© bel etage, Vienna 2018
ISBN-978-3-902117-32-8
Front cover: 20
Back cover: 42

bel etage

WOLFGANG BAUER

THE BEL ETAGE GALLERY EXHIBITING
AT THE TEFAF NEW YORK
SPRING 2018

4 – 8 May 2018

bel etage

A-1010 Vienna, Mahlerstraße 15

Wolfgang Bauer, Kunsthandel GmbH, phone: +43 1 512 23 79, fax: ext. 99, office@beletage.com, www.beletage.com

dorotheergasse 12

A-1010 Vienna, Dorotheergasse 12



MICHAEL THONET

Boppard 1796 – 1871 Vienna

1. BOPPARD CHAIR, MODEL II "Laufstuhl" (Lightweight chair)

Designed and executed by: Michael Thonet, Boppard, around 1840 or possibly Vienna 1844

The frame is of solid and laminated beech and partially veneered in rosewood. The chair back was completed first in three dimensions using a two-stage process. It was then glued to the seat frame. Both cross struts are missing.

Seven such chairs are known.

H 88 cm, SH 44 cm, B 45 cm, T 55 cm

Ref.: B. Willscheid, W. Thillmann (ed.), exhibition cat.: Möbel Design, Roentgen, Thonet und die Moderne, Neuwied, 2011, p.280; W. Thillmann, Perfektes Design, Thonet Nr. 14, Bielefeld, 2015, p. 14; D. E. Ostergard (ed.), Bent Wood and Metal Furniture 1850-1946, 1987, p. 36 f.



L. F. BRENNER & CO.

2. A PAIR OF THREE-BRANCH ART NOUVEAU GIRANDOLES

Designed and executed by: L. F. Brenner & Co., Pforzheim/London, 1902-03
Marked: lion passant, London hallmark 1902-03, import mark, master's mark LFB & Co.

Silver (2430 g), small repair on one branch, some small scratches, very good original condition

H 37 cm



ADOLF LOOS
Brno 1870 – 1933 Kalksburg near Vienna
FRIEDRICH OTTO SCHMIDT

3. "ELEPHANT TRUNK" TABLE

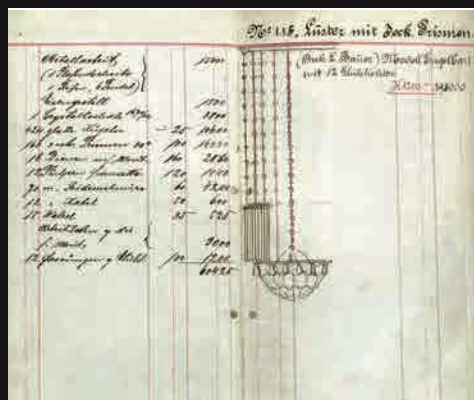
Designed by: Max Schmidt, Werkmeister Berka, Vienna, after 1900
Executed by: Friedrich Otto Schmidt

Eight-trunk legs carved out of solid walnut, mahogany veneer on pine, surface cleaned and slightly repolished, brass and cast brass fittings, 25 ceramic tiles, very good original condition

Excellent Viennese cabinet making

H 65 cm, Ø 86 cm

Ref.: E. B. Otfillinger, Adolf Loos, Wohnkonzepte und Möbelentwürfe, Vienna, 1994, p. 154, cf. ill. pp. 46, 57; Das Interieur, 1903, p. 14



LEOPOLD BAUER
 Jägerndorf 1872 – 1938 Vienna
E. BAKALOWITS SÖHNE

4. RARE AND EXTRAORDINARY CHANDELIER

Designed by: Leopold Bauer, Vienna, 1902, "Modell Engelhart"
 Executed by: E. Bakalowits Söhne, Vienna, model no. 115

Brass, chased and hammered, gilt, intricately cut-glass bowl, 90 individual cut-glass prisms each 30 cm long, glass cylinders and balls, 8 clear glass shades with heart pattern, remains of gold plating, wiring renewed, beautiful original condition

H approx. 130 cm, Ø 70.5 cm

Ref.: Das Interieur, IV, 1903, p. 57; E. Bakalowits Söhne, order book, no. 1, no date



HANS DR. HUGO HENNINGBERG, SPISZKIMMER, BLICK GEBEN DAS FENSTER.



JUTTA SIKA SCHOOL OF PROF. KOLOMAN MOSER

5.1. SIX TEACUPS AND SAUCERS

Designed by: Jutta Sika, 1901/02
Executed by: Wiener Porzellanmanufaktur Josef Böck
Marked: cup: D 501a, saucer: "Schule Prof. Kolo Moser"

Stoneware, decorated in red, three small chips on the cups

Cup: H 5.7 cm, saucer: Ø 15.8 cm

Ref.: W. Neuwirth, Österreichische Keramik des Jugendstils, p. 266, ill. 154; Das Interieur IV, 1903, p. 140



JUTTA SIKA SCHOOL OF PROF. KOLOMAN MOSER

5.2. TEA AND COFFEE SET

consisting of: 6 cups, 6 saucers, coffee and teapot, creamer, sugar bowl

Designed by: Jutta Sika, 1901/02
Executed by: Wiener Porzellanmanufaktur Josef Böck
Signed: cup bottom: "Schule Prof. Kolo Moser", Dec. 57v

Stoneware with red decoration

Saucer: Ø 15.8 cm, cup: H 6 cm, pots: H 20 cm and H 18.5 cm, sugar bowl: H 11.3 cm

Ref.: W. Neuwirth, Österreichische Keramik des Jugendstils, p. 266, ill. 154; Das Interieur IV, 1903, p. 140



**JOSEF URBAN
SANDOR JARAY**

6. A PAIR OF ARMCHAIRS

Designed by: Josef Urban, Vienna, 1902
Executed by: Sandor Jaray



Solid beech, maple wood veneer, some carvings, inlay in different stained wood, cast bronze sabots replaced, stained and surface professionally repolished, some restorations to the veneer, very good condition

H 88 cm, SH 46 cm, W 68 cm, D 61 cm

Ref.: Die Kunst, Monatshefte für freie und angewandte Kunst, VI. Jahrgang, vol. 8, Munich 1903, p. 31; M. Kristan, Joseph Urban, Vienna, 2000, plate 28, p. 278f., ill. 279



CHARLES RENNIE MACKINTOSH

Glasgow 1868 – 1928 London

ALEX MARTIN

7. A PAIR OF LADDERBACK CHAIRS
for Miss Cranston's Willow Tea House in Glasgow

Designed by: Charles Rennie Mackintosh, 1903
Executed by: Alex Martin, 1903/05

Oak with dark green-brown stain, waxed, replaced cane, chairs are in good overall condition and were restored 15 years ago

H 104.5 cm, SH 43 cm, W 44.5 cm, D 38 cm

Ref.: R. Billcliffe, Charles Rennie Mackintosh, The Complete Furniture, Furniture Drawings & Interior Designs, London, 2009, p. 150–153, ill. 1903.D, 1903.C, p. 157, ill. 1908.8;
Die Kunst, Monatshefte für freie und angewandte Kunst, VIII. Jahrgang, XII, Munich, 1905, p. 257–273





KOLOMAN MOSER
 1868 – Vienna – 1918
E. BAKALOWITS SÖHNE

8. 16-PIECE MUSEUM-QUALITY DISPLAY SET

consisting of: 1 large carafe, 1 water jug with lid, 1 medium-sized water glass, 1 small water glass, 1 large beer/water glass, 1 small beer/water glass, 1 small punch glass, 1 large white wine glass, 1 small red wine glass, 1 red wine glass with long stem, 1 champagne flute, 1 large liqueur glass, 1 small liqueur glass, 1 rum glass, 1 dessert bowl

Transparent glass, optically blown

H 20 cm max

Ref.: Kunst und Kunsthandwerk, vol. 3, Vienna, 1900, p. 50; G. E. Pazaurek, Moderne Gläser, p. 59, ill. 47





**KOLOMAN MOSER
J. & J. KOHN**

9. SECESSIONIST SHOWCASE

Designed by: Koloman Moser, Vienna, 1901
Executed by: J. & J. Kohn, model nos. 1304, 3140, later model no. 600/4, from 1901 on

Bent beech and plywood, mahogany veneer, stained and polished, cut and faceted glass, brass fittings, 1 brass ball and one fitting replaced, 1 door restored around the locker, 1 showcase with glass top on lower cabinet, some retouches, surface slightly repolished, very good condition

H 188 cm, W 65 cm, D 56/60 cm (with glass)

This showcase was first presented as part of a drawing-room ensemble at the winter exhibition of the Austrian Museum of Art and Industry (MAK) in 1901. The year after, it was shown in Turin and, in 1904 in Saint Louis.

Ref.: Hohe Warte, II, 1905-06, p. 276; J. & J. Kohn Italian sales catalogue, 1906; R. Leopold (ed.), Koloman Moser 1868-1918, Vienna, 2007, p. 120, p. 122; D. E. Ostergard (ed.), Bent Wood and Metal Furniture 1850-1946, 1987, p. 110; G. Renzi, Il mobile moderno, Gebrüder Thonet Vienna, Jacob & Josef Kohn, Milan, 2008, pp. 62 f



**KOLOMAN MOSER
WIENER WERKSTÄTTE**

10. HAT PIN

Designed by: Koloman Moser, Vienna, 1906
Executed by: Wiener Werkstätte, model no. G 0640
Marked: WW, KM, rose mark, Austrian hallmark, head of Diana (A for Vienna, 2 for 900/1000)

Silver

L 22.4 cm, Ø 3.3 cm

Ref.: Wiener Werkstätte, photographic archives at the Austrian Museum of Applied Arts (MAK), Vienna, photo inv. no. WWF 91-25-10, model no. G 0640



**KOLOMAN MOSER
WIENER WERKSTÄTTE**

11. A PAIR OF VASES

Designed by: Koloman Moser, Vienna, 1904
Executed by: Wiener Werkstätte, model no. S 356
Marked: KM, WW, rose mark, Austrian hallmark, head of Diana (A for Vienna, 2 for 900/1000)

Silver, pierced square latticework, base with bead and reel moulding, excellent original condition

H 21 cm

Shown at: Zilvermuseum Sterckshof, Antwerp, 2010, "Wiener Werkstätte Silver and Belgian Silver Design"

Ref.: K. Goubert, Zilvermuseum Sterckshof (ed.), Wiener Werkstätte Silver and Belgian Silver Design, 2010, p. 92



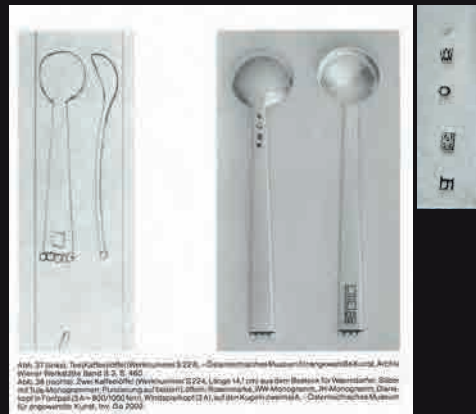


Abb. 37 (links): Die Buttermesser der Wiener Werkstätte S. 228, - Österreichisches Museum für Angewandte Kunst, Arch. Wiener Werkstätte, Band 2, S. 142.
Abb. 38 (rechts): Zwei Buttermesser (Vorkommen S. 224, Länge 14,1 cm) aus dem Besteck für Vorkamler: Silber mit Silber Metallarmaturen, Fundierung auf Eisenblech, Wiener Werkstätte, WW-Metallwaren, im Auftrag der Wiener Werkstätte (A für 900/1000), auf dem Kopf der Messer, - Österreichisches Museum für Angewandte Kunst, inv. no. 9903



JOSEF HOFFMANN
Brtnice 1870 – 1956 Vienna
WIENER WERKSTÄTTE

12. BUTTER KNIFE
from the "flat model" cutlery series

Designed by: Josef Hoffmann, 1903/04
Executed by: Wiener Werkstätte, around 1906, comp. works no. S 843
Marked: JH, WW, rose mark, Austrian hallmark, head of Diana (A for Vienna, 2 for 900/1000), French importation mark swan (1893 until 1970)

Silver, very good original condition

L 14.7 cm

In 1906, this set of cutlery was shown on the jubilee banquet table in the Wiener Werkstätte exhibition "Der gedeckte Tisch". The very rare cutlery series, "flat model", is usually adorned with 4 balls at the end of the handle. Our butter knife is one of the rarer versions with 5 balls.

Ref.: W. Neuwirth, Josef Hoffmann, Bestecke für die Wiener Werkstätte, Vienna, 1982, p. 29 f, comp. ill. p. 55



JOSEF HOFFMANN
WIENER WERKSTÄTTE

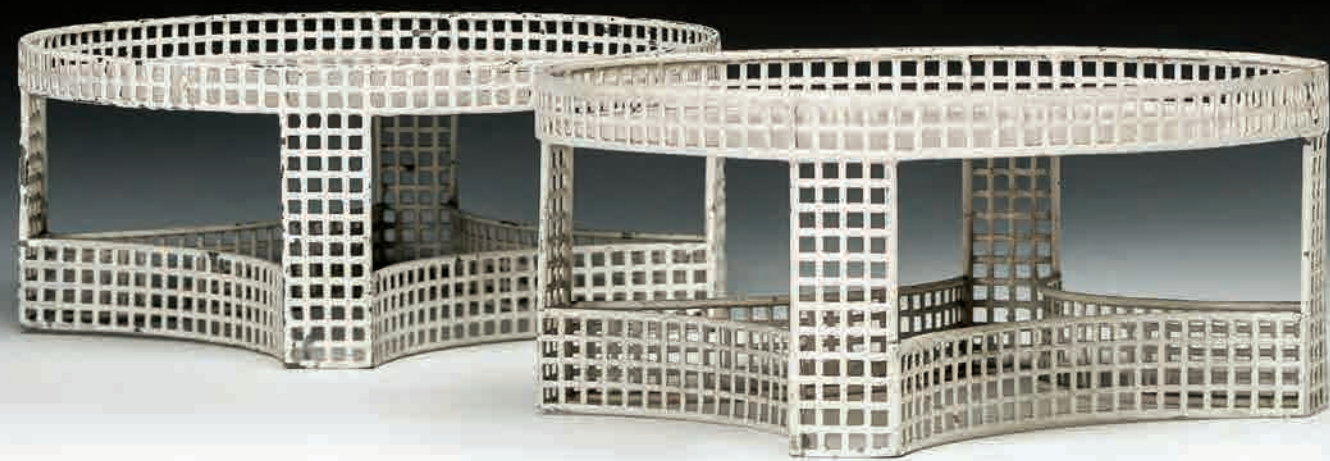
13. BUTTER DISH

Designed by: Josef Hoffmann, 1906
Executed by: Wiener Werkstätte, model no. S 0811, between 1906 and 1910
Marked: JH, WW, rose mark, Austrian hallmark head of Diana (A for Vienna, 2 for 900/1000), silversmith JW? (Josef Wagner)

Silver, clear glass liner, pierced square latticework

H 3.5 cm, W 13.5 cm, Ø 9.5 cm

Ref.: A contemporary photograph is preserved in the Wiener Werkstätte archives at the Austrian Museum of Applied Arts (MAK), Vienna, inv. no. WWF 94-63-4



**JOSEF HOFFMANN
WIENER WERKSTÄTTE**

14. A PAIR OF CENTREPIECES

Designed by: Josef Hoffmann, Vienna, 1904
Executed by: Christoph Clöter for Wiener Werkstätte, model no. M 0266
Marked: WIENER WERK STÄTTE (3-line rubber stamp)

Zinc-plated sheet metal, enamelled white, partially repainted, good original condition

H 10 cm, Ø 24 cm

Ref.: A contemporary photograph is preserved in the Wiener Werkstätte archives of the Austrian Museum of Applied Arts (MAK), Vienna, inv. no. WWF 132-23-1



**JOSEF HOFFMANN
WIENER WERKSTÄTTE**

15. SIX RARE BOTTLE COASTERS

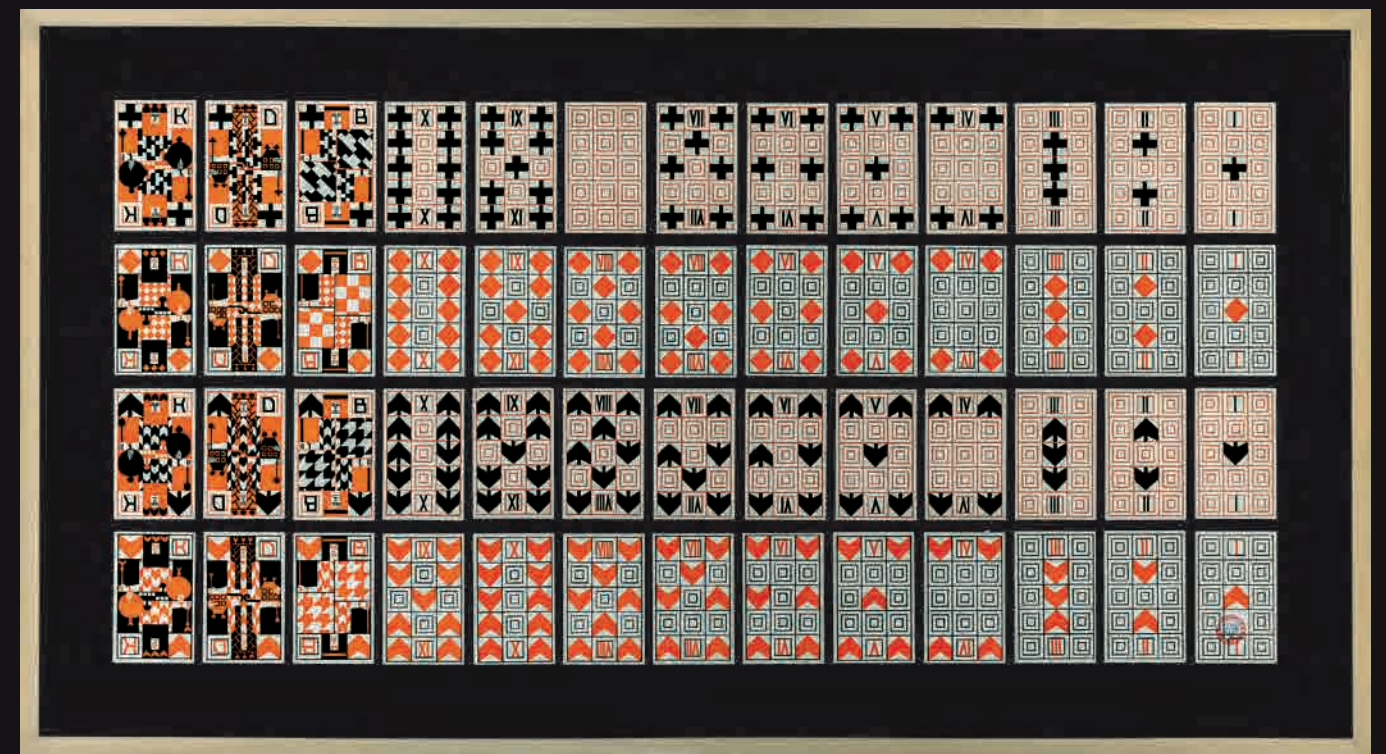
Designed by: Josef Hoffmann, Vienna, around 1905
Executed by: Wiener Werkstätte, around 1910, similar to model no. S 0657
Marked: WW, Austrian hallmark, head of Diana (A for Vienna, 2 for 900/1000)

Silver, excellent original condition

Ø 8 cm

Ref.: compare contemporary photograph in the Wiener Werkstätte archives of the Austrian Museum of Applied Arts (MAK), Vienna, inv. no. WWF 94-62-4





OSKAR KOKOSCHKA
 Pöchlarn/Lower Austria 1886 – 1980 Montreux
 WIENER WERKSTÄTTE/BERGER AND CHWALA

16. "THE DREAMING YOUTH"

Designed by: Oskar Kokoschka, Vienna, 1908
 Executed by: Wiener Werkstätte, Berger and Chwala
 Copy 174 (of 275), edited by Kurt Wolff, 1917

2 black and white and 8 colour lithographs, original linen-covered upper cover with lithographed vignette on paper, faint staining to cloth, very good original condition

H 24.2 cm, L 27.6 cm

Ref.: M. Pabst, Wiener Graphik um 1900, p. 300 f, ill. no. 330, pp. 302, 307; exhibition cat. of MoMA New York: German Expressionism, The Graphic Impulse, MoMA, 2011

EDITHA "DITHA" MOSER
 Vienna 1883 – 1969 Mödling
 ALBIN BERGER UND J. GLANZ

17. DECK OF CARDS

Designed by: Editha "Ditha" Moser, 1906
 Executed by: Albin Berger und J. Glanz

Colour lithography in red and black on card, back with a red square pattern

51 cards, 1 cover card, 8 of clubs missing, very good unplayed condition

H 8 cm, W 5 cm

Ref.: R. Leopold, G. Pichler (ed.), exhibition catalogue Koloman Moser, 1868–1919, Leopold Museum Privatstiftung, Vienna, 2007, p. 418



**JOSEF HOFFMANN
J. & J. KOHN**

18. TABLE

Designed by: Josef Hoffmann, 1908
Executed by: J. & J. Kohn, model no. 1263, from 1908 on

Six balls connect each of the four columns, bent beech and plywood, dyed to rosewood and polished, surface slightly refreshed, top and base covered with very fine hammered brass, very good original condition

H 74 cm, W 50 cm, D 50 cm

Ref.: G. Renzi, *Il mobile moderno*, Gebrüder Thonet Vienna, Jacob & Josef Kohn, Milan, 2008, pp. 220 f



**JOSEF HOFFMANN/KUNSTSCHAU 1908
J. & J. KOHN**

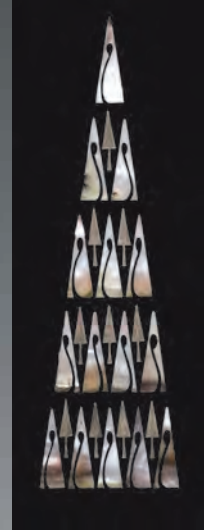
19. SEVEN-BALL CHAIR

Designed by: Josef Hoffmann, Vienna, 1907/08
Executed by: J. & J. Kohn, from 1908 on, model no. 371

Bent beech wood, stained, surface cleaned and slightly repolished, reupholstered with an original Jugendstil fabric

H 108 cm, SH 46 cm, W 44 cm, D 44 cm

Ref.: J. & J. Kohn sales catalogue, 1909; *Moderne Bauformen VII*, 1908, p. 368; G. Renzi, *Il mobile moderno*, Gebrüder Thonet Vienna, Jacob & Josef Kohn, Milan, 2008, pp. 206 f.; Fremdkörper (ed.), *Moderne Möbel, 150 Jahre Design*, 2009, p. 658



**JOSEF URBAN
SANDOR JARAY**

20. A PAIR OF ARMCHAIRS
for the 17th Exhibition of the Hagenbund, 1905

Designed by: Josef Urban, Vienna, 1905
Executed by: Sandor Jaray



EXTERIOR, HAGENBUND EXHIBITION, VIENNA
DESIGNED BY JOSEF URBAN
EXECUTED BY SANDOR JARAY



EXTERIOR, HAGENBUND EXHIBITION, VIENNA
DESIGNED BY JOSEF URBAN
EXECUTED BY SANDOR JARAY

Solid beech, pear wood veneer, stained and polished, inlay in mother-of-pearl and white metal, cast white metal cuffs, surface slightly restored and seats re-upholstered in black Alcantara-like fabric, very good condition

H 105 cm, SH 48 cm, W 64 cm, D 58 cm

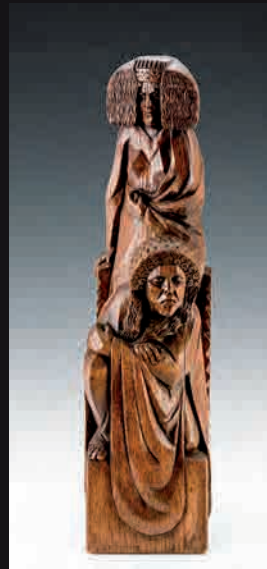
Ref.: The Studio, vol. 37, 1906, p. 74, 76; M. Kristan, Joseph Urban, Vienna, 2000, p. 115, ill. 115/2, p. 314, ill. 314

FRANZ BARWIG the Elder

Schönau near Neutitschein (Bohemia) 1868 – 1931 Vienna
Sculptor, woodcarver, ceramic and porcelain designer

From 1888 to 1897, Barwig studied woodcarving at the Vienna School of Arts and Crafts. From 1890 to 1904, he was active as a self-employed sculptor. 1904/05: teacher at the Technical School of Wood Processing in Villach. 1910–1922: teacher at the Vienna School of Arts and Crafts. 1931: memorial exhibition at the Vienna Secession, exhibition at the Austrian Gallery. Models for the Vienna Augarten porcelain manufactory and the Wienerberger Brick Works and Construction Company. Many of his works can be found in the Austrian Gallery, Belvedere.

Ref.: Thieme/Becker, Allgemeines Lexikon der bildenden Künstler, vol. 2, p. 587; W. Neuwirth, Wiener Keramik, p. 102; Österreichische Galerie im Oberen Belvedere, 1969, Franz Barwig



FRANZ BARWIG THE ELDER

21. THE GODS

Designed: Vienna, 1908
Unsigned

Oak, carved

H 47.5 cm, W 9.4 cm, D 11 cm

We would like to thank Dr. Fellingner of the Belvedere, Vienna, for providing us with the documentation and Mrs Susanne Klein-Barwig (Franz Barwig's granddaughter) and Mr Franz Bogner for the helpful information.

Ref.: M. Kristan, Joseph Urban, Vienna, 2000, p. 372; photo archives of the Belvedere, Vienna; "The Studio" Yearbook of Decorative Art, 1911, p. 245



FANNY HARLFINGER-ZAKUCKA and MINKA PODHÁJSKÁ/WIENER WERKSTÄTTE

22. CHESS SET

Designed by: Fanny Harlfinger-Zakucka and Minka Podhájská, 1905

Executed by: Wiener Werkstätte

Stamped on underside of base: WW, FHZ and MP

H 8.7 cm to 12.5 cm

Exhibited at: Österreichische Galerie Belvedere, Vienna, 2008, Gustav Klimt und die Kunstschau 1908; Österreichische Galerie Belvedere, Vienna, 2016, Kubismus – Konstruktivismus – Formkunst

Ref.: A Contemporary photograph is preserved in the Wiener Werkstätte photographic archives at the Austrian Museum of Applied Arts (MAK), Vienna, inv. no. WWF 89-1-3



JOSEF HOFFMANN
JOHANN BACKHAUSEN & SÖHNE

23. CARPET

Designed by: Josef Hoffmann for Palais Stoclet, 1907, model bellflower
Executed by: Backhausen & Söhne, Vienna

Machine-woven carpet, wool, minor defects due to moth damage, washed and surface shorn approx.
1 mm in the carpet pile to revive the partially very faded surface

Pattern length 47 cm
Carpet roll width: 88 cm, lengths: 232 cm, 188 cm, 170 cm, 113 cm

Ref: Das Interieur, XIII, 1912, ill. 9; "The Studio" Yearbook of Decorative Art, 1912, p. 188; Design sketch found at: viennatextiles.blogspot.de; <https://www.pinterest.at/source/viennatextiles.blogspot.de/> on 13 Nov. 2017.





FRITZ NAGEL
 born 1885 in Vienna
A. NAGEL

24. CABINET

Designed by: Fritz Nagel, Vienna, 1908/10
 Executed by: Möbelfabrik A. Nagel
 Marked: original company label: MÖBELFABRIK A. NAGEL WIEN IX PORZELLANGASSE 27, LIECHTENSTEINSTR. 38a

Solid pear and veneer, 4 drawers in solid pear, top covered in original leather, copper decorative nails, surface cleaned and slightly refreshed, excellent original condition with wonderful patina

H 119 cm, W 112 cm, D 43 cm

Ref.: Das Interieur, XII, 1911, p. 48



**BERTOLD LÖFFLER/MICHAEL POWOLNY
VEREINIGTE WIENER UND GMUNDNER KERAMIK**

25. CENTREPIECE

Designed by: Bertold Löffler/Michael Powolny, 1906
Executed by: Vereinigte Wiener und Gmundner Keramik, around 1912, model no. 43
Marked: WK, GK, 43

Ceramic, grey clay, decorated in black and white, glazed, excellent original condition

H 21 cm, Ø 25 cm

Ref.: Sales catalogue Vereinigte Wiener und Gmundner Keramik, 1914, sheet XIII, W 43



RICHARD LUKSCH /HUGO F. KIRSCH/ WIENER WERKSTÄTTE

26. THE GOLDEN AGE (GIRL WITH HOUR GLASS)

Designed by: Richard Luksch, 1904
Executed by: Hugo F. Kirsch
Signed: WIENER/WERK/STÄTTE (3 lines), W...Kirsch (bottom), LUKSCH (side)

Ceramic, white glaze, painted gold

H 33.4 cm

Ref.: Deutsche Kunst und Dekoration, vol. VI, 1907, p. 472; Deutsche Kunst und Dekoration, vol. XXII, 1908, p. 18; Deutsche Kunst und Dekoration, vol. XXIII, 1908, p. 71; Moderne Bauformen, VII, 1908, pp. 387, 407; W. Neuwirth, Wiener Keramik, Brunswick, 1974, p. 215, ill. 127; W. Neuwirth, Wiener Keramik nach 1900, Hugo Kirsch, 1984, pp. 18, 128 f.; A. Husslein-Arco and A. Weidinger (ed.), Belvedere exhibition catalogue, 2008, Gustav Klimt und die Kunstschau 1908, pp. 424 f



**LEOPOLD FORSTNER
WIENER MOSAIKWERKSTÄTTE**

27. MOSAIC PANEL "FISH WITH STRIPES"

Designed by: Leopold Forstner, around 1910
Executed by: Wiener Mosaikwerkstätte

Multi-coloured glass, ceramic mosaic, excellent original condition

H17 cm x W 16 cm

Provenance: Estate of Leopold Forstner

Ref.: W. Mrazek, Leopold Forstner, Ein Maler und Material-Künstler des Wiener Jugendstils, Vienna, 1981, p. 44 (ill.); comp. Deutsche Kunst und Dekoration, 1909, vol. XXIV, p. 85; M. Bauer, Leopold Forstner. Ein Materialkünstler im Umkreis der Wiener Secession, Vienna/Cologne/Weimar 2016



**LEOPOLD FORSTNER
WIENER MOSAIKWERKSTÄTTE**

28. MINERVA MOSAIC PANEL

Designed by: Leopold Forstner, around 1908
Executed by: Wiener Mosaikwerkstätte

Multi-coloured glass, ceramic and mother of pearl mosaic, elements with leaf gold, patinated brass, cream lacquered original frame, excellent original condition

H 39.5 cm x W 39.5 cm/H 51.5 cm x W 51.5 cm (with frame)

Shown at: Österreichische Galerie Belvedere, Vienna, 2016, Sünde und Sezession. Franz von Stuck in Wien

Ref.: comp. Deutsche Kunst und Dekoration, 1909, vol. XXIV, p. 85; M. Bauer, Leopold Forstner. Ein Materialkünstler im Umkreis der Wiener Secession, Vienna/Cologne/Weimar 2016; A. Husslein-Arco (ed.)/A. Klee, Österreichische Galerie Belvedere, Vienna, Exhib. Cat., Sünde und Sezession. Franz von Stuck in Wien, Munich 2016, p. 200, ill. 130





**JOSEF HOFFMANN
WIENER WERKSTÄTTE**

29. SILVER BELL

Designed by: Josef Hoffmann, Vienna, around 1910
Executed by: Wiener Werkstätte
Marked: WW, JH, rose mark, Austrian hallmark, head of Diana (A for Vienna, 2 for 900/1000)

Silver, 900/1000, bead and reel decoration, silver-plated brass clapper

H 9 cm



**JOSEF HOFFMANN
WIENER WERKSTÄTTE**

30. SILVER CIGARETTE BOX

Designed by: Josef Hoffmann, Vienna, around 1908
Executed by: Wiener Werkstätte, model no. S tz 4
Marked: rose mark, WW, Wiener Werk Stätte (3 lines), JH, Austrian hallmark (A for Vienna, 2 for 900)

Silver, gilded interior, black onyx cabochon

L 8.3 cm, W 7 cm

Ref.: Sales catalogue of Wiener Werkstätte, 1928, p. 501





**JOSEF HOFFMANN
WIENER WERKSTÄTTE**

31. THREE BOTTLE COASTERS

Designed by: Josef Hoffmann, Vienna, around 1909

Executed by: Wiener Werkstätte

Marked: JH, WIENER WERKSTÄTTE, WW, Austrian hallmark - small head of Diana (A for Vienna, 2 for 900/1000), rose mark, master's mark JH in circle (most probably for Josef Holi)

Silver, ivy-leaf pattern, very good original condition

Ø 9.8 cm



**JOSEF HOFFMANN
WIENER WERKSTÄTTE**

32. THREE SILVER BASKETS

Designed by: Josef Hoffmann, 1909

Executed by: Wiener Werkstätte, model no. S 1451

Marked: JH, WW, WIENER WERKSTÄTTE (1 line), rose mark, Austrian hallmark - small head of Diana (A for Vienna, 2 for 900/1000), JH in circle (master's mark for Josef Holi), unidentified master's mark JF in circle

Silver, ivy-leaf pattern, original glass liners (one chipped), excellent condition

H 26.5 cm, W 9.5 cm, D 6 cm



Ref.: A contemporary photograph is preserved in the Wiener Werkstätte archives at the Austrian Museum of Applied Arts (MAK), Vienna, inv. no. WWF 94-102-2



**JOSEF HOFFMANN
WIENER WERKSTÄTTE**

33. WRITING ACCOUTREMENT

Designed by: Josef Hoffmann, 1908
Executed by: Wiener Werkstätte, model no. S 1033, 1908 until 1911
Marked: JH, WW, rose mark, WIENER WERK STÄTTE (3 lines),
 Austrian hallmark - head of Diana (A for Vienna, 2 for 900/1000),
 AW (master's mark of Adolf Wertnik)

Silver, ivy-leaf pattern, glass liner

Tray: H 9.5 cm, L 21 cm, W 17 cm



Ref.: Wiener Werkstätte photographic archives at the Austrian Museum of Applied Arts (MAK), Vienna, photo inv. no. WWF 94-71-7, model no. S 1033; Wiener Werkstätte drawing archives at the Austrian Museum of Applied Arts (MAK), Vienna, inv. no. KI 12069-8-1



**JOSEF HOFFMANN
WIENER WERKSTÄTTE**

34. SILVER TABLE LAMP

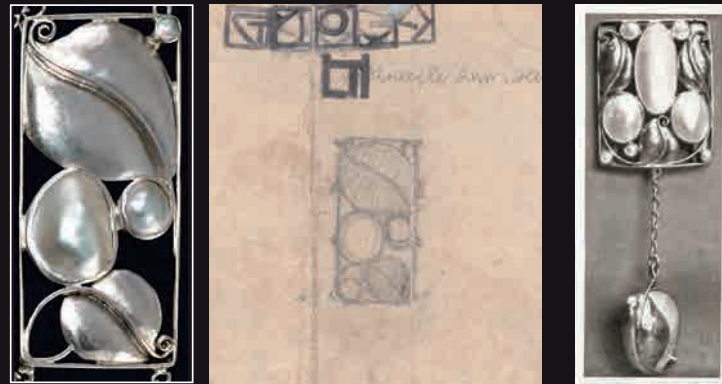
Designed by: Josef Hoffmann, Vienna, 1910
Executed by: Wiener Werkstätte, model no. S 1981
Marked: rose mark, WW, JH, master's mark WA (Adolf Wertnik?),
 Austrian hallmark - head of Diana (A for Vienna, 800/1000 fine)

Silver, chased, bead and reel decoration, white opaque glass column with a small crack, lampshade renewed

H 45 cm (32 cm without lampshade), Ø 26 cm

Ref.: Wiener Werkstätte, vol. 12; special edition "Deutsche Kunst und Dekoration", 1910/11, p. 179





JOSEF HOFFMANN
WIENER WERKSTÄTTE

35. NECKLACE

Designed by: Josef Hoffmann, around 1909

Executed by: Wiener Werkstätte, model no. G 1039 (rectangular pieces), G 957 (pendant)

Marked: pendant: Austrian hallmark head of Diana (A for Vienna, 2 for 900/1000), clasp: WW

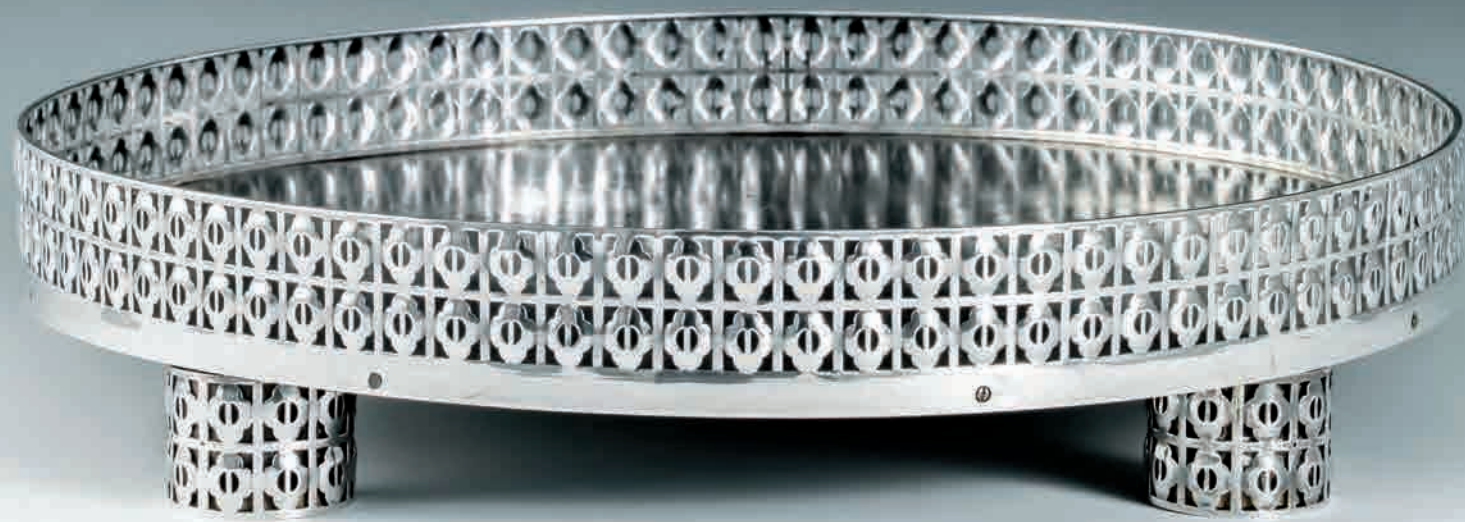
925 fine silver, (according to an expert opinion 878 fine silver for the extended chain), mother-of-pearl, remains of gold plating

L 43 cm

Exhibited at: Gustav Klimt Zentrum am Attersee, 2016, Emille Flöge. Reform der Mode, Inspiration der Kunst

Ref.: Deutsche Kunst und Dekoration, vol. XXV, 1909, p. 383; WW archives, Museum of Applied Arts, Vienna, design drawing inv. no. KI 12149-7/KI 12159-22, model no. G 1039/G 957; S. Tretter/P. Weinhäupl (ed.), Gustav Klimt Zentrum am Attersee, Exhib. Cat., Gustav Klimt. Emille Flöge. Reform der Mode, Inspiration der Kunst, Vienna 2016





WIENER WERKSTÄTTE
 0 1 2 3 4 5 6 7 8 9 10 11 12

**JOSEF HOFFMANN
 WIENER WERKSTÄTTE**

36.1. LARGE TRAY/36.2. A PAIR OF CUPS AND SAUCERS/36.3. CONTAINER

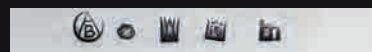
Designed by: Josef Hoffmann, 1909

Executed by: Wiener Werkstätte, model no. S 1851, S 1749, 1909-1915

Marked: JH, WW, WIENER WERK STÄTTE (3 lines), rose mark, master's mark AB in circle
 Austrian hallmark - head of Diana (A for Vienna, 2 for 900/1000), Austrian hallmark -
 small head of Diana (A for Vienna, 2 for 900/1000), container: master's mark JH in circle,
 WIENER WERKSTÄTTE (1 line)

Silver, blossom pattern, rosewood, original glass liners, very good original condition

Tray: Ø 37 cm
 Cup: H 10.5 cm (with glass)
 Container: H 7 cm



WIENER WERKSTÄTTE
 0 1 2 3 4 5 6 7 8 9 10 11 12

Ref.: Contemporary photographs are preserved in the Wiener Werkstätte archives at the Austrian Museum of Applied Arts (MAK), Vienna, inv. nos. WWF 94-118-1, WWF 94-105-7,
 comp.: a contemporary photograph which shows a smaller cylindrical container, Vienna, inv. no. WWF 94-118-1



**JOSEF HOFFMANN
WIENER WERKSTÄTTE**

37. OUTSTANDING PAIR OF MUSEUM QUALITY SIDEBOARDS WITH ATTENDANT SHOWCASE

forming part of a dining room designed for the 1912 spring exhibition of "Österreichisches Kunstgewerbe" (Austrian Arts & Crafts)

Designed by: Josef Hoffmann, Vienna, 1912

Executed by: J. Soulek for Wiener Werkstätte, 1912

Fabric design for curtain: Wilhelm Jonasch, around 1910; motif: front garden

Fabric production: Wiener Werkstätte

Solid pear and pear veneer, dyed black and polished, carved leaf and grape decoration

First-class original condition, surface slightly improved, dye retouched in places, fabric reproduced using original examples

Sideboard: H 136 cm, W 117 cm, D 60 cm

Showcase: H 135.5 cm, W 121.5 cm, D 42.5 cm

Ref.: D. K. & D., 1912, vol. XXXI, p. 183; Kreisel/Himmelheber, Die Kunst des deutschen Möbels, Munich, 1973, ill. 980; The Studio IV, 1912, p. 217







**JOSEF HOFFMANN
E. BAKALOWITS SÖHNE**

38. EIGHT-BULB PALM-SHAPED GLASS CHANDELIER

Designed by: Josef Hoffmann, Vienna, around 1914
Executed by: E. Bakalowits Söhne, Vienna

Cast brass, very fine chiselled, small repairs on the branches, cut crystal glass beads, some of them replaced, wiring renewed, easily adjustable to the height of the room, very good original condition

H 115 cm (including chain), Ø 75 cm



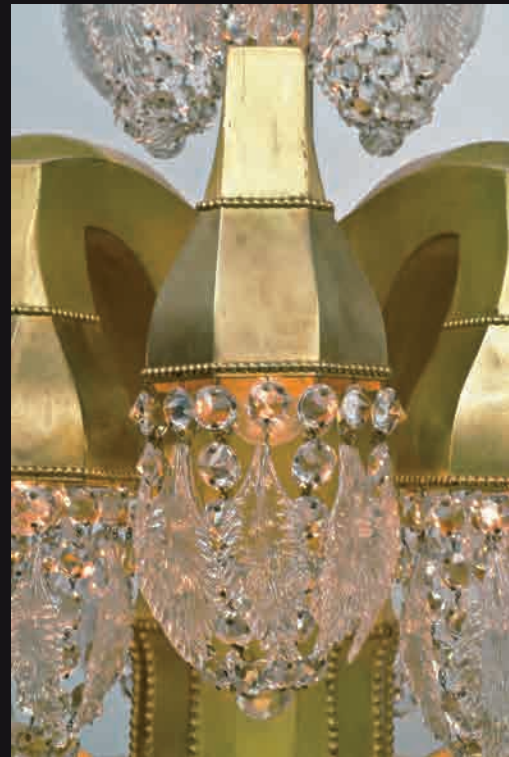
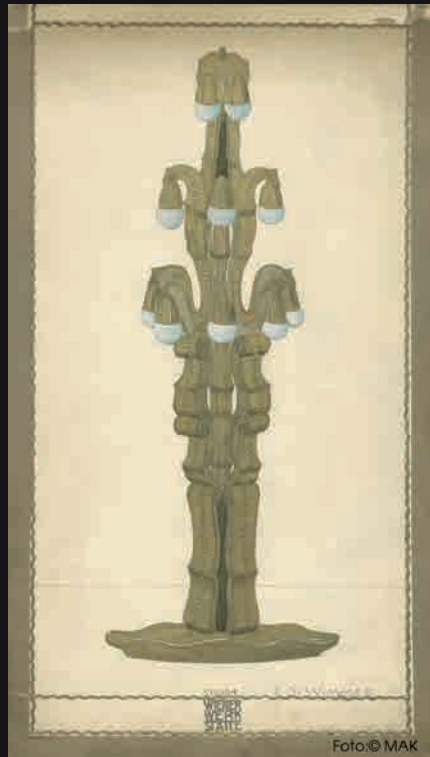
**JOSEF HOFFMANN
E. BAKALOWITS SÖHNE**

39. SIXTEEN-BULB PALM-SHAPED GLASS CHANDELIER

Designed by: Josef Hoffmann, Vienna, around 1914
Executed by: E. Bakalowits Söhne, Vienna

Cast brass, very fine chiselled, small repairs on the branches, cut crystal glass beads, some of them replaced, wiring renewed, easily adjustable to the height of the room, very good original condition

H 110 cm (including chain), Ø 75 cm



EDUARD JOSEF WIMMER-WISGRILL/JOSEF HOFFMANN

1882 – Vienna – 1961

WIENER WERKSTÄTTE

40. MAGNIFICENT 24-BRANCH STANDARD LAMP

Designed by: Eduard Josef Wimmer-Wisgrill, Josef Hoffmann, Vienna, around 1912

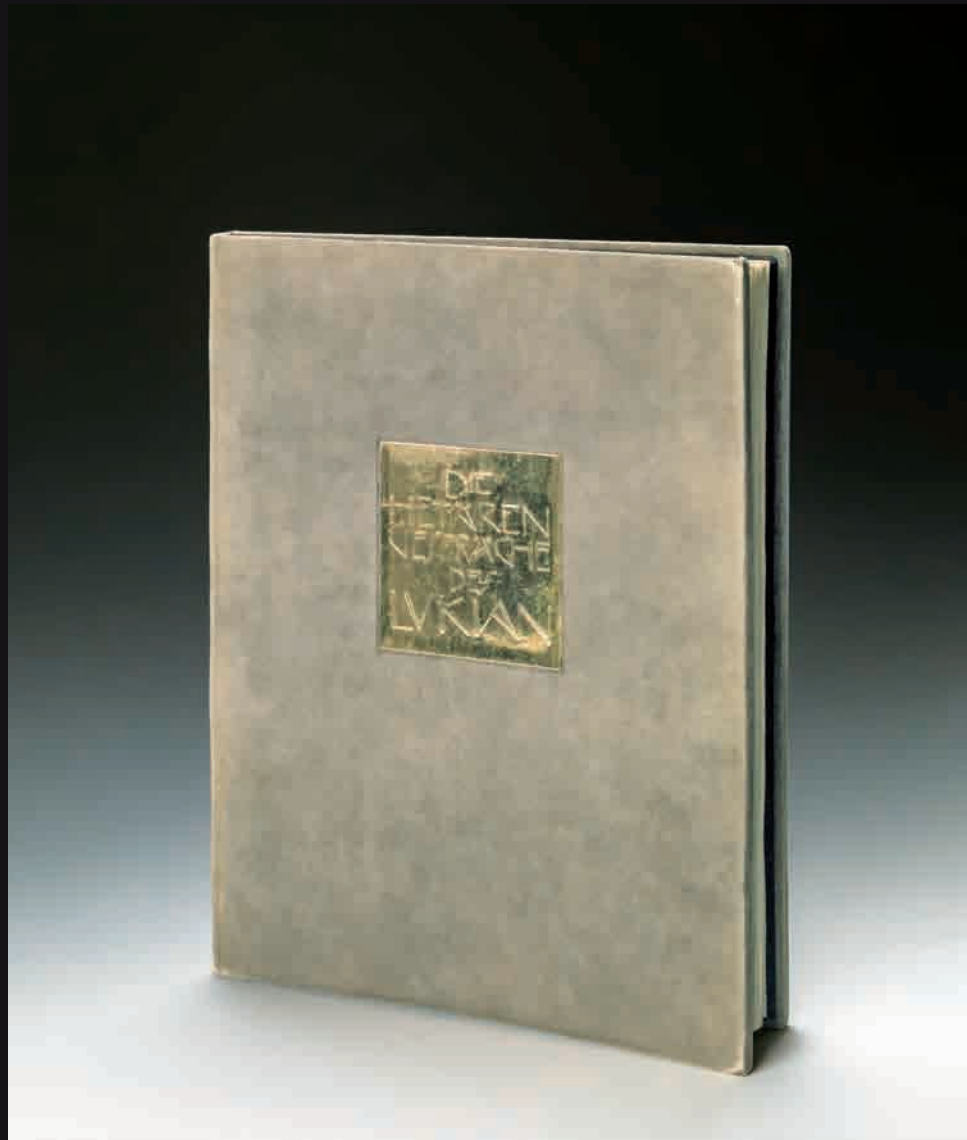
Executed by: Wiener Werkstätte

partially carved beech and oak, partially gold plated and gold leaf, glass holder made of gold-plated brass with bead and reel plated decoration, original cut glass hangings, original leaf shaped glass hangings, good original condition, gold plating partially added, some of the glass hangings are missing

H 221 cm, Ø 71.5 cm

Provenance: Jerome and Margaret Stonborough-Wittgenstein

Ref.: Wiener Werkstätte archives at the Austrian Museum of Applied Arts (MAK), Vienna, design drawing inv. no. KI 13224-7



GUSTAV KLIMT/JOSEF HOFFMANN
 1862 - Vienna - 1918 / Brtnice 1870 - 1956 Vienna
WIENER WERKSTÄTTE

41. LUCIAN'S HETAIRIKOI DIALOGOI

Fifteen Illustrations: Gustav Klimt, chamois leather binding: Josef Hoffmann
 Executed by: Wiener Werkstätte, 1907, premium deluxe edition B, no. 86/100
 Marked: in gold on the reverse JH, WIENER WERK STÄTTE (3 lines)

37 x 29,5 cm

Provenance: private collection of Johann Georg Prinz von Sachsen (1869-1938), with his ex libris.

Exhibited: Österreichische Galerie Belvedere, Vienna 2017.

Ref.: Stella Rollig and Tobias G. Natter (ed.), Klimt und die Antike, Erotische Begegnungen, Munich/London/New York 2017, p. 8-25; Renée Price (ed.), Gustav Klimt. The Ronald S. Lauder and Serge Sabarsky Collections, Neue Galerie New York, Munich/London/New York 2007, p. 130-143



MICHAEL POWOLNY

Judenburg 1871 – 1954 Wien

WIENERBERGER ZIEGELFABRIKS- UND BAUGESELLSCHAFT

42. NEPTUNE

Designed by: Michael Powolny, 1915/16, decoration for the men's steam-bath of the "Dianabad" in Vienna

Executed by: Wienerberger Ziegelfabriks- und Baugesellschaft, model no. 4081

Unmarked

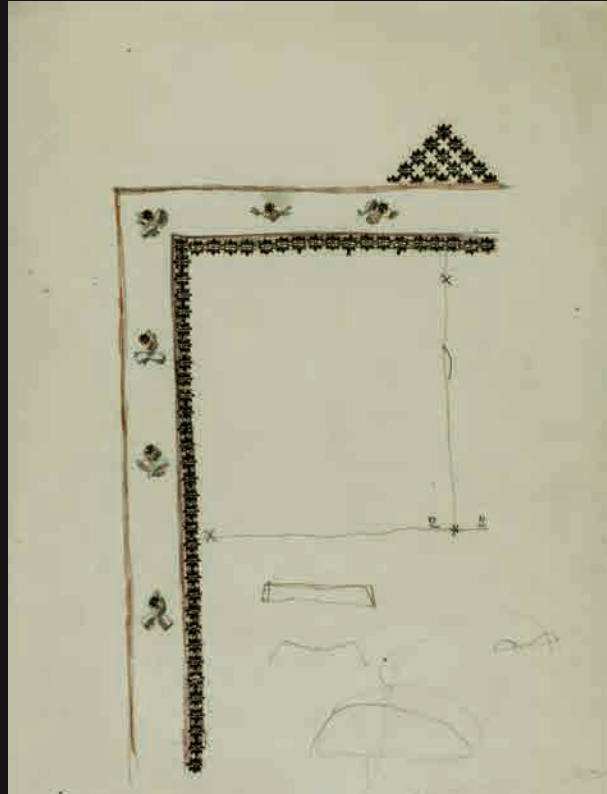
Red clay, ivory colour glaze, mint condition

H 125 cm

Shown at: MAK Austrian Museum of Applied Arts, Vienna, 2014, Brüder Schwadron. Neue Orte & Spuren

Ref.: E. Frottier, Michael Powolny, Keramik und Glas aus Wien 1900-1950, cat. raisonné 198, ill. 54, 55; T. Zickler (ed.), Brüder Schwadron. Neue Orte & Spuren, Vienna 2014, p. 19-23





DAGOBERT PECHE

43.1. DESIGN SKETCH FOR A FRAME/MIRROR

Signed: Peche 22
Dated: 27. V. (19)22

Pencil and coloured pencil on paper

H 33.5 x W 21.3 cm



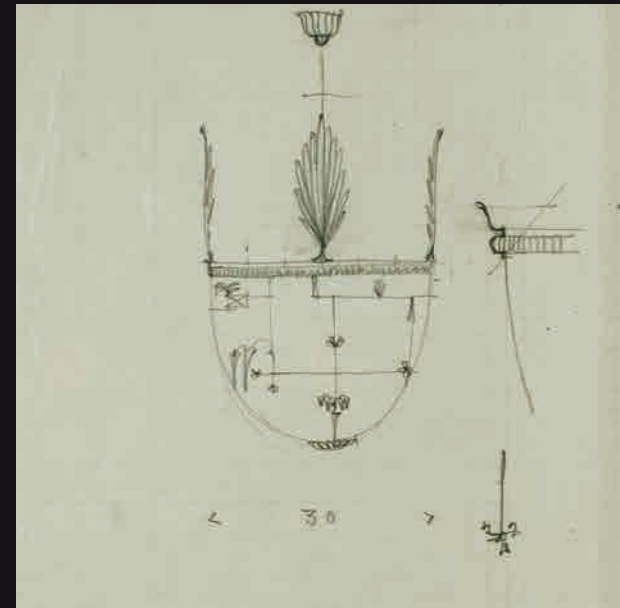
DAGOBERT PECHE

43.2. DESIGN SKETCH FOR A BROOCH

Signed: Peche (19)19

Ink over pencil on coloured paper, verso detail drawings

H 19.5 x W 16.3 cm



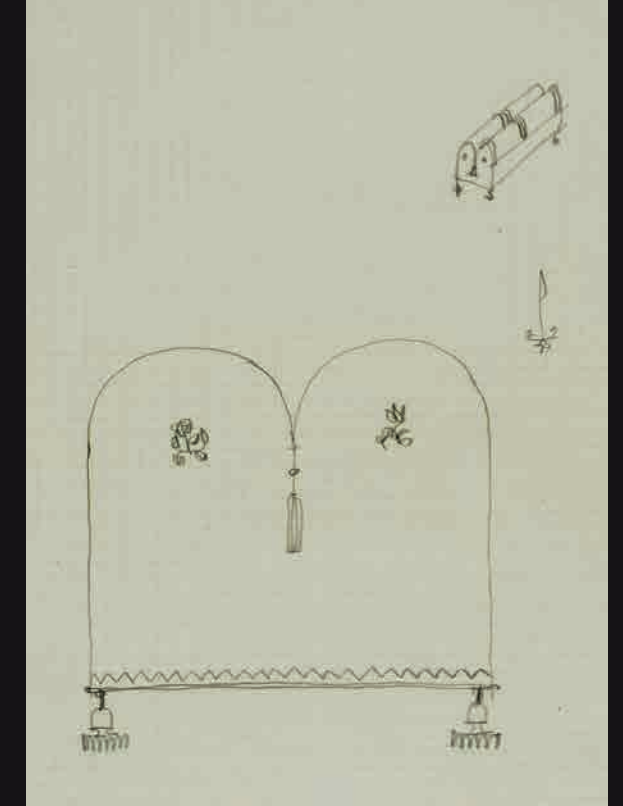
DAGOBERT PECHE

43.3. DESIGN SKETCH FOR A CHANDELIER

Signed: Peche (19)22

Pencil on squared paper, verso detail drawings

H 16.3 cm x W 19.5



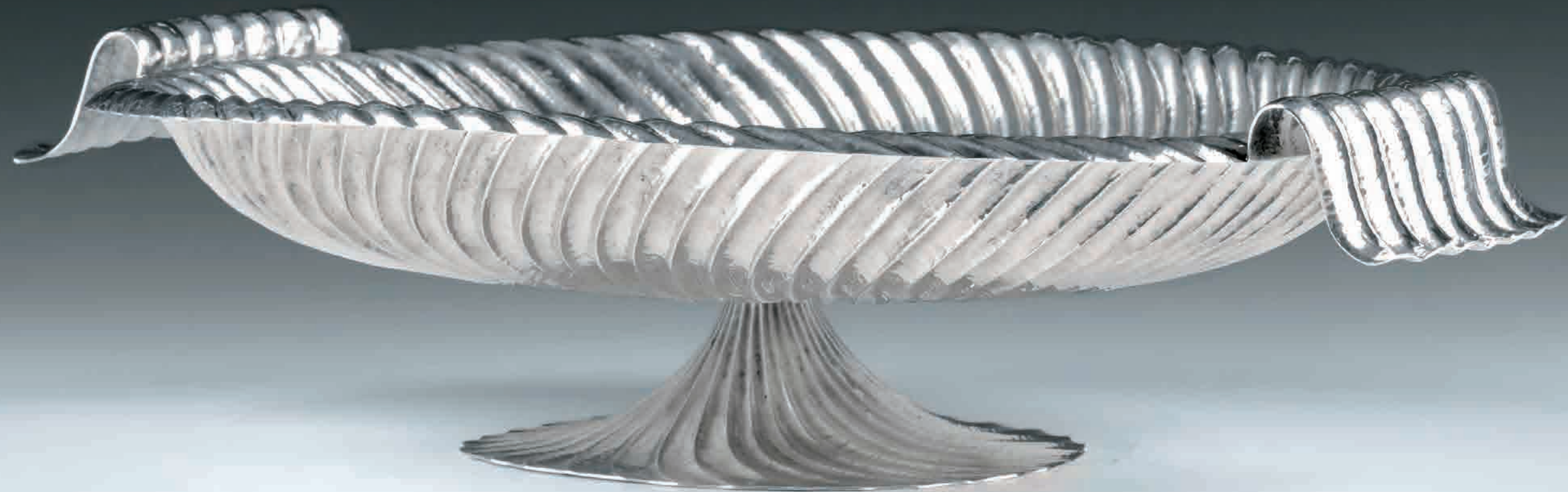
DAGOBERT PECHE

43.4. DESIGN SKETCH FOR A CASKET

Signed: Peche (19)22

Pencil on squared paper

H 32.6 x W 19.5 cm



DAGOBERT PECHE
WIENER WERKSTÄTTE

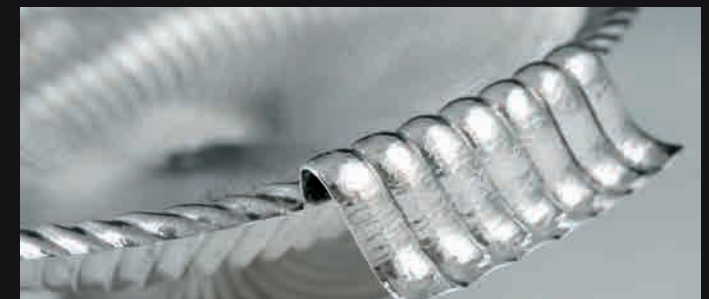
44. SILVER CENTREPIECE

Designed by: Dagobert Peche, Vienna, 1920
Executed by: Wiener Werkstätte, model no. S 5101 - S sh 1, 1923/24
Marked: WIENER WERK STÄTTE (3 lines), P with star (Dagobert Peche), 900, Austrian hallmark - toucan head (W for Vienna, 2 for 900/1000)
stand: Austrian hallmark - toucan head (W for Vienna, 2 for 900/1000)

Silver, chased and hammered

H 8.5 cm, L 34.4 cm

Ref.: A contemporary photograph is preserved in the Wiener Werkstätte photographic archives at the Austrian Museum of Applied Arts (MAK), Vienna, inv. no. WWF 96-222-3; WW archive, Austrian Museum of Applied Arts, Vienna, design drawing inv. no. KI 2012639-5





45.1. FABRIC APPLIQUÉ

Designed and executed by: School of Otto Erich Wagner, 1920s

Fabric, sewn together and embroidered

H 35 cm, W 35 cm

Exhibited at: Österreichische Galerie Belvedere, Vienna, 2016, Kubismus – Konstruktivismus – Formkunst

Ref.: A. Husslein-Arco (ed.)/A. Klee, Österreichische Galerie Belvedere, Vienna, Exhib. Cat., Kubismus – Konstruktivismus – Formkunst, Munich/London/New York, 2016, p. 253, ill. 204



45.2. FABRIC APPLIQUÉ

Designed and executed by: School of Otto Erich Wagner, 1920s

Fabric, sewn together and embroidered

H 29.8 cm, W 30.8 cm

Exhibited at: Österreichische Galerie Belvedere, Vienna, 2016, Kubismus – Konstruktivismus – Formkunst

Ref.: A. Husslein-Arco (ed.)/A. Klee, Österreichische Galerie Belvedere, Vienna, Exhib. Cat., Kubismus – Konstruktivismus – Formkunst, Munich/London/New York, 2016, p. 253, ill. 203



SUSI SINGER WIENER WERKSTÄTTE

46. GIRL WITH FLOWERS

Designed by: Susi Singer, 1923
Executed by: Wiener Werkstätte
Marked: WW, MADE IN AUSTRIA, Nr. 235 (works number)

Ceramic, white and colour glaze

H 38.5 cm

Provenance: Josef Hoffmann
After Josef Hoffmann's death in 1956 the Sculpture passed to his widow Carla, who gave it to her daughter in law A. Hoffmann-Beerens (her son Wolfgang's widow) in 1981.

Ref.: Sales catalogue of the Wiener Werkstätte 1923, p. 109, K 235, Susi Singer



**JOSEF HOFFMANN
WIENER WERKSTÄTTE**

47. A PAIR OF LOOP HANDLED CENTREPIECES

Designed by: Josef Hoffmann, 1925
Executed by: Wiener Werkstätte, model no. M sh 17
Marked: JH, WIENER WERK STÄTTE (3 lines), Made in Austria

Brass, chased and hammered, hand polished, excellent original condition

H 19 cm, W 29.5 cm

Ref.: Wiener Werkstätte sales catalogue, 1928, p. 405; Wiener Werkstätte archives, Austrian Museum of Applied Arts (MAK), Vienna, design drawing inv. no. K 12059-9, model no. M sh 17



MARCEL BREUER
BAUHAUS DESSAU attr.

48. MODELS FOR TUBULAR STEEL FURNITURE

Designed by: Marcel Breuer, between 1925 and 1928
 Executed by: Bauhaus Dessau attr., around 1930

Brass, nickel-plated, chairs with fabric, laminated wood, table tops painted in different colours, scale 1:6, original cardboard boxes lined in velvet, top has model number, very good original condition

The models were probably made as demonstration aids for classes at the Bauhaus.

H 15.5 cm max.

Ref.: Magdalena Droste, Marcel Breuer Design, pp. 88 ff



**JOSEF HOFFMANN
FRANZ VON ZÜLOW**

49. CHEST: THE FAUNA OF THE EARTH

Chest design: Josef Hoffmann
 Painted by: Franz von Zülow, around 1930
 Signed at the front, lower right: Franz von Zülow

H 79 cm, W 60 cm, D 41 cm

Shown at: Musée des Beaux Arts, Brussels, 1989; L'art deco en Europe, ill. cat. no. A 12, p. 37

Ref.: Die schönen Künste, 1947, II, p. 118



AT THE VIE:ARTPORT
YOUR ART IS
SECURELY
HARBOURED



FIRST, FULLY AIR-CONDITIONED
DUTY FREE WAREHOUSE
FOR ART IN AUSTRIA

Over 8000 m2 fully air-conditioned art depot offers undreamed-of and virtually unlimited opportunities.

Storage space for individual pieces to private, discrete berths for entire collections. Always secured, always perfectly and precisely climate and temperature-controlled as well as individually managed and serviced. In addition, a customs warehouse for works of art within the EU, air conditioned, tax and duty-free. Together with our showroom the perfect environment for art lovers, art collectors, art dealers.

Located in Vienna, 10 minutes from the city centre, 10 minutes from the airport.

Contact:

Birgit Vikas birgit.vikas@vieartport.at
Andreas Kratochwil andreas.kratochwil@vieartport.at
phone +43 1 748 55 44
fax +43 1 748 55 34

Bertl-Hayde-Gasse 4, 1110 Vienna, email: office@vieartport.at, www.vieartport.at



BARTA & PARTNER

Vienna . Munich . London . Zurich . Singapore

Second to none insuring art

Warum Kunst bei BARTA & PARTNER versichern?

Barta & Partner engagiert sich für den Schutz und die Erhaltung von Kunstgegenständen. Es beraten Sie erfahrene Kunsthistoriker und Experten. Regelmäßig wird Ihre Kunstsammlung dem aktuellen Marktwert angepasst.

Barta & Partner versichert gegen alle Risiken und Gefahren, denen Ihre Kunstwerke ausgesetzt sind und beinhaltet Risiken, die mit herkömmlichen Versicherungen nicht abgedeckt sind. Barta & Partner bietet länderübergreifende Deckungskonzepte und Schadensregulierungen.

Why insure art at BARTA & PARTNER?

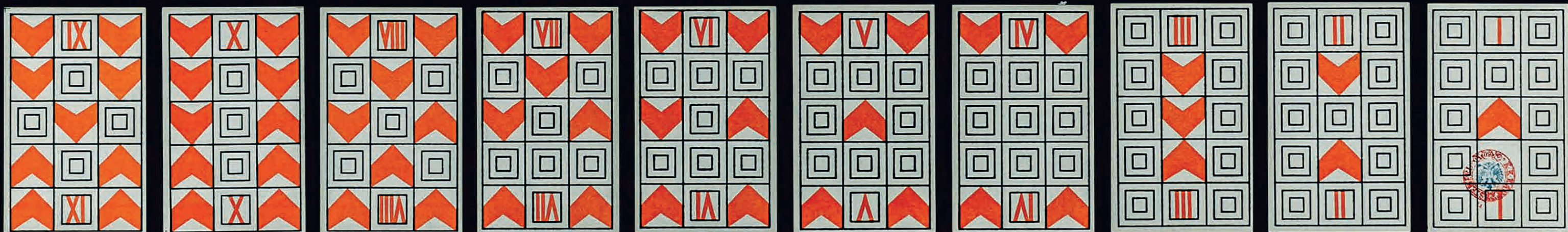
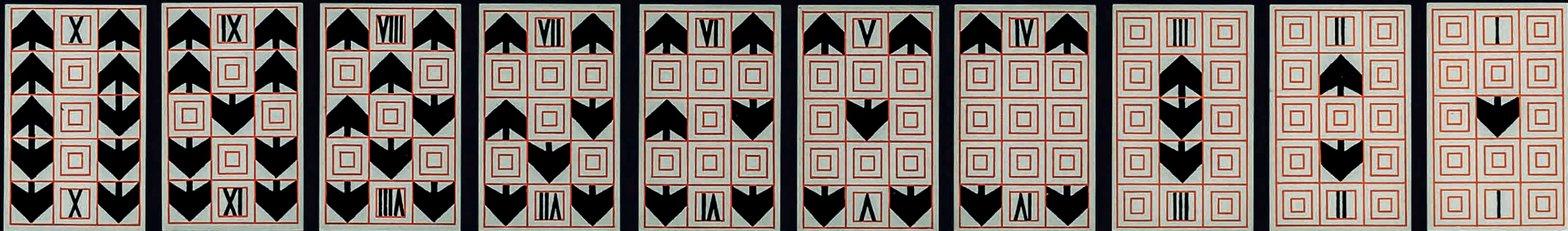
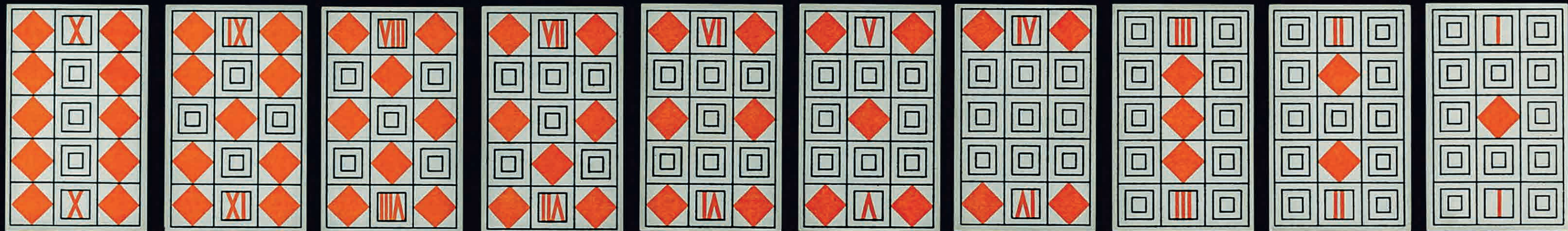
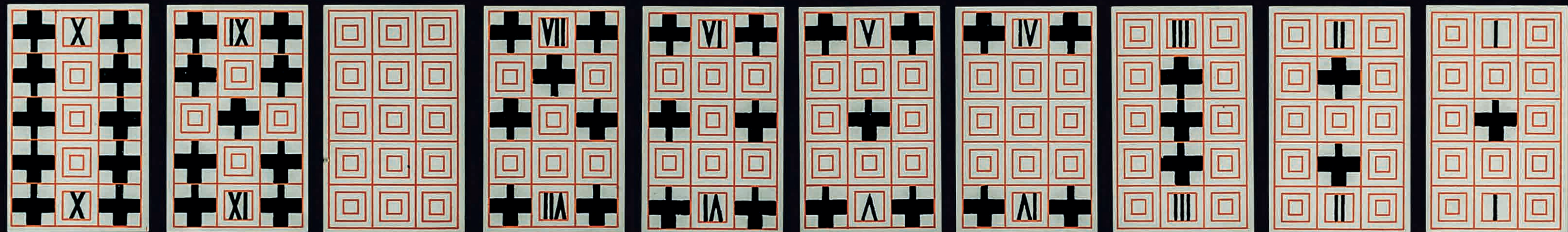
Barta & Partner protects and preserves fine art. Experienced art historians and experts are here to advise. The value of your art collection will be frequently adjusted to the current market rate.

Barta & Partner guarantees an all-round insurance protection against all risks and dangers which your art works are confronted with. The art insurance bears risks, which ordinary insurances cannot offer. By the means of international cooperation and co-ordination Barta & Partner offers border-crossing concepts of cover and a regulation of damage abroad.

For further assistance please call Philip Machat: +43 1 532 08 40-16, pm@bartart.com

Kunstversicherungsconsulting - Insurance for Fine Art

Am Rudolfsplatz, Gölsdorfasse 3/6, 1010 Vienna, Austria, Tel. +43 1 532 08 40
4th Floor, Lloyd's Building, 12 Leadenhall Street, London . EC3V 1LP, UK, Tel. +44 207 816 59 79
office@bartart.com . www.bartart.com





bel etage